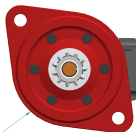
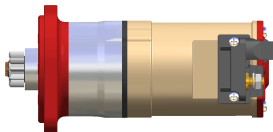
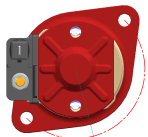


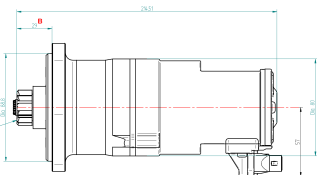
# BRISE 12v 2 kw Axial Starter with Planetary Gearbox Drive

## REVISION HISTORY

REV.	DESCRIPTION	DATE	APPRO



Flange carbide in 6 gears relative to Torque Stack



Place 1 Torq 29 mm OD

Place 1 Torq rod 25L

Dimension A Spigot Dia

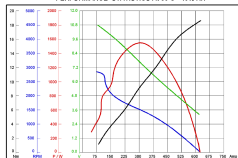
**Part # key 89 29 09 AX G**

Dimension B Place flange to clamp face

Axis

Planetary Gearbox Drive

## PERFORMANCE STATISTICS At 30°C - 40% RH



Material	NAME	DATE	Finish	Treatment
	T.M.	11 03 08		
DRAWN			<b>BRISE Auto-Electrical Systems</b>	
CHECKED			TITLE	
SMB APPR			Mini Cooper 89/29/09/AX/G	
SMB APPR			SIZE	REV
			A2	
UNLESS OTHERWISE SPECIFIED			SCALE	WEIGHT: 2.7Kg SHEET 1
DIMENSIONS ARE IN MILLIMETERS			1:1	
ANGLES 10/25°			Cad file	
2 PLS A8-10 PLS A8-825				
© Copyright Brise Ltd. Unit Q3 Northfleet Industrial Estate DA11 8SN All Rights Reserved				