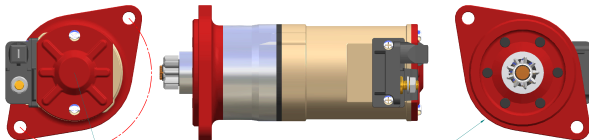


BRISE 12v 2 kw Axial Starter with Planetary Gearbox Drive

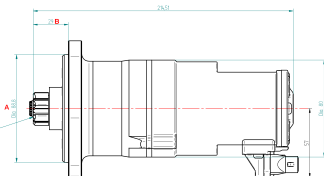
REVISION HISTORY

REV.	DESCRIPTION	DATE	APPRO



120° 20° 20° 15° 15° 15°

front cap rotate in 6 position relative to Terminal block



Flange 9 Tooth 25 mm S18

Flange 9 Tooth red 2.76

Gearbox 4 Sprag Eng

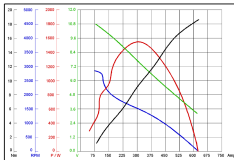
Part # key 89 29 09 AX G

Dimension 6 Please treat to clamp force

Axial

Planetary gearbox Drive

PERFORMANCE STATISTICS At 30°C - 40% RH



Material	NAME	DATE	Finish	Treatment
DRAWN	T.M.	11 03 08	BRISE	Auto-Electrical Systems
CHECKED			TITLE	
ENG APPR			MG Sprite Midget Econ 89/29/09/AX/G	
SHOP APPR			SIZE: DWG NO	REV
			A2	MGE892909
			Cad file	
			UNLESS OTHERWISE SPECIFIED	
			DIMENSIONS ARE IN MILLIMETERS	
			ANGLES 10/25°	
			2 PLS A8-10 PL A8-825	
			SCALE: 1:1	WEIGHT: 2.7Kg SHEET 1
			Copyright: Brise Ltd. Unit Q3 Northfleet Industrial Estate DA11 8SN	
			All Rights Reserved	