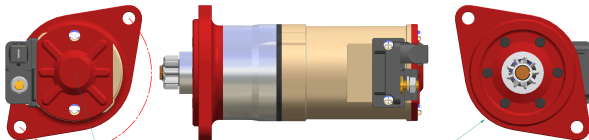


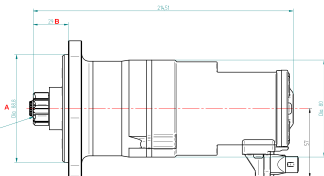
BRISE 12v 2 kw Axial Starter with Planetary Gearbox Drive

REVISION HISTORY

REV.	DESCRIPTION	DATE	APPRO



front cap rotate in 6 position relative to Terminal block



Flange 9 Tooth 25 mm S&S

Flange 9 Tooth red 2.7k

Dimension A Spigot Dia

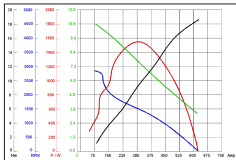
Part # key 89 29 09 AX G

Dimension B Flange that fits output shaft

Axial

Planetary Gearbox Drive

PERFORMANCE STATISTICS At 30°C - 40% RH



Material	NAME	DATE	Finish	Treatment
DRAWN	T.M.	11 03 08	BRISE	Auto-Electrical Systems
CHECKED			TITLE	MG Sprite Midget Econ 89/29/09/AX/G
ENG APPR			SIZE	DWG NO
SHOP APPR			A2	MGE892909
			UNLESS OTHERWISE SPECIFIED	SCALE
			ANGLES 10/25°	1:1
			2 PLS A8-10 PLS A8-825	WEIGHT: 2.7Kg
				SHEET 1
				Copyright: Brise Ltd. Unit Q3 Northfleet Industrial Estate DA11 8SN
				All Rights Reserved